

THE GARDEN OF TOMORROW



INSTALLATION CONCEPT

The Garden of Tomorrow of External Reference hosts the winning projects of the "ITmakES design" competition and is designed to evoke wonder and amazement, two feelings that according to ancient Greek philosophers are fundamental to push man to investigate reality and to ask questions.

It is composed of giant plants that use technology to transform into artificial organisms that imitate the structure and function of natural plants. The installation concept, in line with the exhibited projects, nomadic, multifunctional, and symbolic, represents a manifesto in itself, where man - in this case, the designers - and their artifacts, are placed at the center of nature, in opposition to the dominant anthropocentric and mechanistic vision.

Today, it has become urgent for humanity and the planet to adopt a more ecosystemic and holistic perspective that takes into account the importance of preserving and protecting the environment and the living beings that inhabit it. This requires a reevaluation of our priorities and a change in the way we think and relate to the natural world, and in the case of us designers, with the projects we create and the materials we use.



PROJECT

These green sculptures, symbols of the nature we are destroying have been created with an innovative material capable of absorbing CO₂ through photolysis. Pure.Tech is an advanced bioplastic polymer, derived from the glucose sugar of corn to obtain a 100% natural mineral compound.

The Secret Garden of External Reference presents an extravagant nature that exhibits systems so complex that they appear artificial, almost mechanical, with plants that grow thanks to potato sugars and feed on CO₂ and greenhouse gases, and that are parametrically designed, 3D printed, but behave like natural plants.

The Pure Plants project is located at the intersection of art and design. Produced in collaboration with La Máquina, they have been exhibited in several shows and are part of an evolving collection, born with the Forest of Intelligence of the Spain Pavilion for Expo 2020 in Dubai.





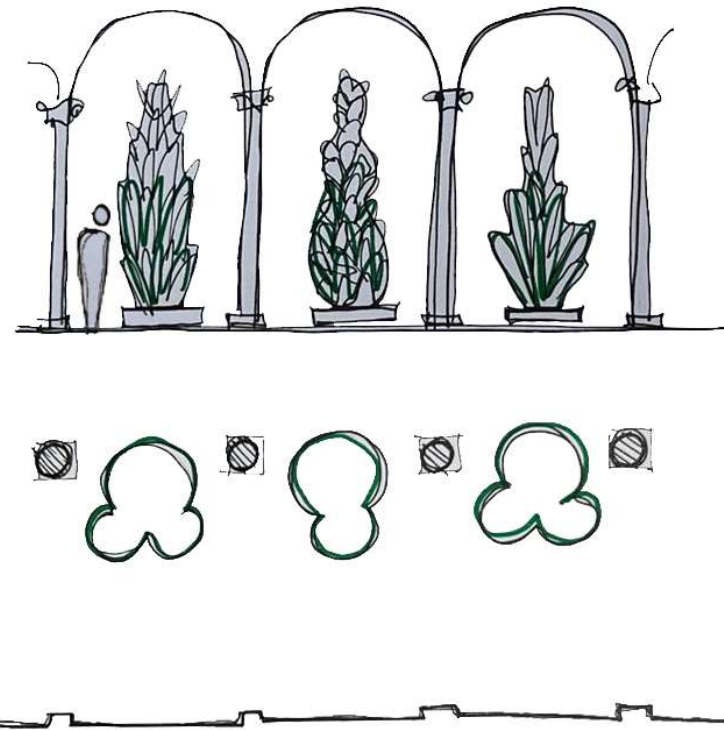
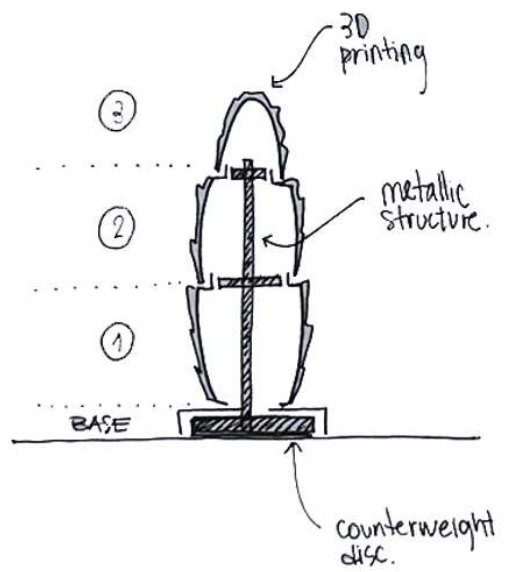
✕ EXTERNAL REFERENCE



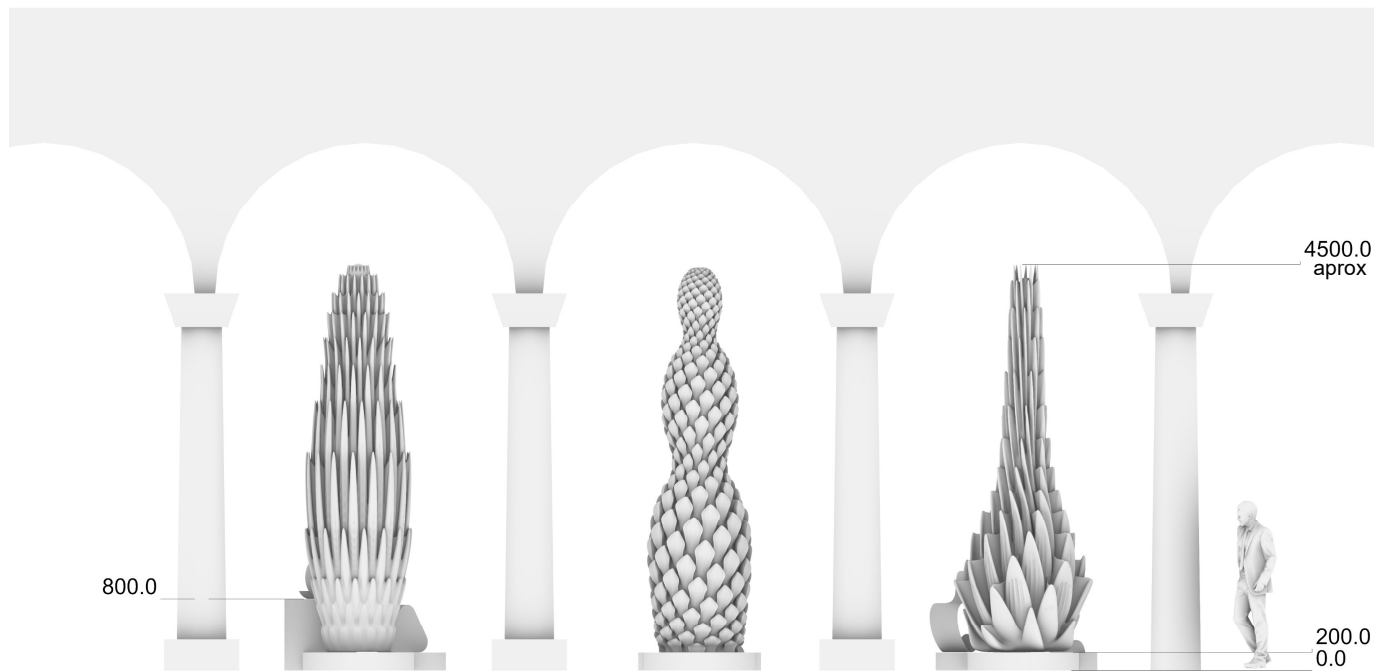
X EXTERNAL
REFERENCE



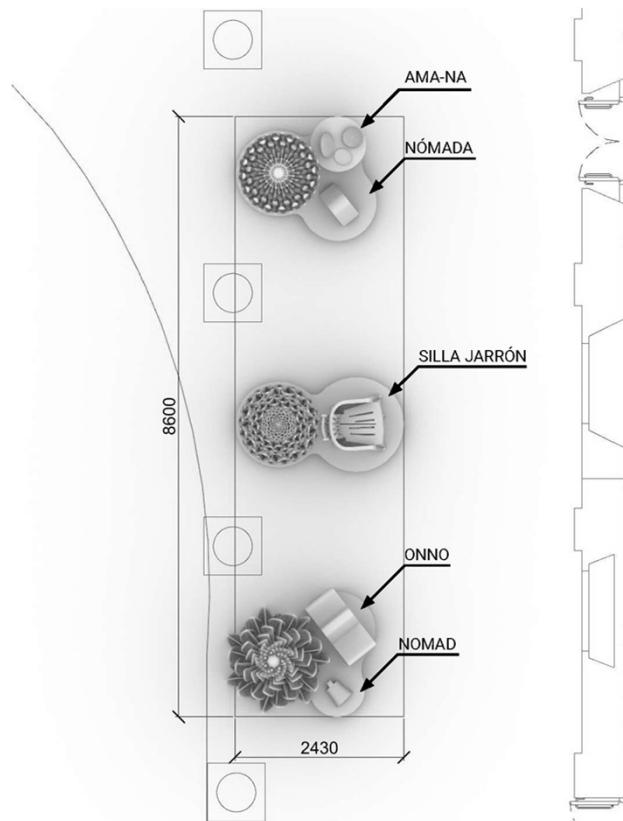
 EXTERNAL
REFERENCE



EXTERNAL REFERENCE



EXTERNAL REFERENCE



AMA-NA

Serie di ceste in biomateriale preformato

1. HxWxD 80x280x287mm
2. HxWxD 101x260x230mm
3. HxWxD 57x510x260



EL NOMADA METROPOLITANO

Ecosistema artificiale mobile e galleggiante



NOMAD

Sgabello rivolto ai giovani
HxWxD 360 x 316 x 335mm



ONNO

Sedia multifunzionale e trasformabile
HxWxD 911x1050x500mm

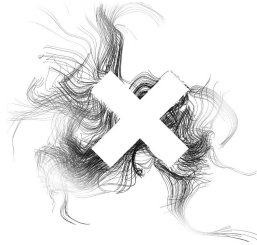


¿ UNA SILLA, UN JARRÓN?

Studio concettuale
HxWxD 1150 x 700 x 650mm



EXTERNAL
REFERENCE



THANK YOU

EXTERNAL REFERENCE

Carrer de Valencia, 248, Ppa1, 1.
08008, Barcelona, Spain

Carmelo Zappulla
Founder and Director
+34 647997921
carmelo@externalreference.com
Barcelona - Spain

All rights reserved by External & Partners S.L.U., Spain.

